



# XC DTS710



The DTS710 is a narrow yet powerful drill with a light footprint. Its small size and lightweight frame make it the ideal drill for projects where site impact and access difficulties are of importance. The rig is fitted with automatic rod-breakout, multiple emergency stops and a safety cage with electronic-hydraulic override for rotation cut-off to ensure crew safety.



# THE XC DTS710

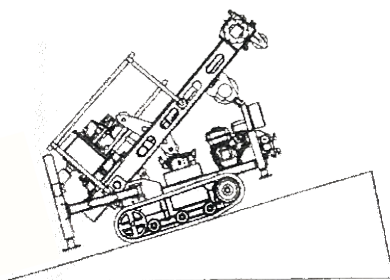
## SPECIFICATIONS



Length - Rig	2600mm
Length - Power Pack	2800mm
Combined Length	5500mm
Width - Rig	1100mm
Width - Power Pack	1200mm
Weight - Drill Unit	1000kg
Weight - Power Pack	760kg
Height Travelling	1900mm
Min Drilling Height	2400mm
Max Drilling Height	3500mm
Ground Pressure	0.50kg/cm <sup>2</sup>
Noise Level at Control Panel	80dB

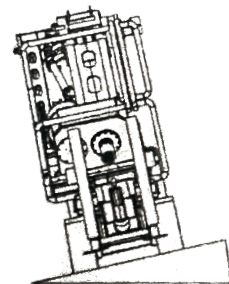
Diesel Engine	44Kw
Rotary Drive Torque	2100Nm
Pullout Capacity	1000kg
Casing Extractor	5000kg
Auger Speed	170rpm
Coring Speed	740rpm
Drill Stroke	1200mm
Main Winch	750kg
Secondary Winch	NA
Water Pump	Standard
Footclamps	Standard - 170mm
Head Swing	Hydraulic
Jacklegs	4
Dump Mast	Standard
Safety Cage	Hydraulic Interlock
SPT Hammer	Automatic available on request, manual as standard

## TRAVELLING



Maximum un-assisted climbing angle

MAX  
16 °  
9%



MAX  
12 °  
8%



FOR BOOKINGS, PLEASE CONTACT SIMON

[simon@terratest.com.au](mailto:simon@terratest.com.au) | 0412 496 672